

# *Waterfall Catering*

*We Deliver Delicious!*

*2025*

**GRADUATION PARTY CATERING**

652 Ridge Road, Pittsburgh, PA 15205 tel: 412-867-9196

[www.waterfallcateringppgh.com](http://www.waterfallcateringppgh.com)

# Waterfall Catering

*We Deliver Delicious!*



For your graduation party, we are offering a **PARTY PAN Menu** option, as well as a **PER PERSON** pricing option.

PARTY PAN items are priced by the food tray or pan and do not include any party supplies.

PER PERSON pricing offers complete meals based on a specific number and include all catering supplies.

## KITCHEN PICK UP

Schedule a pickup at our kitchen during normal business hours (typically 8 am - Noon, Mon to Sat). Simply pre-schedule your pickup time, pull up to the door & our staff will assist you with loading.

## DELIVERY

Depending on availability, delivery of orders over \$500 can be arranged.

Basic delivery includes our professional staff arriving at your home or party location within a 30-minute window. Delivery includes set up of any disposable items you have ordered. Lightweight wire chafing racks & sterno fuel are available for purchase or rental. It is your responsibility to return any rental items within one week. Delivery fees start at \$50 and are determined by time and location of delivery. Gratuity is not added to party pan orders but appreciated by the staff.

## DATE HOLDS

Call (412) 867-9196 or email [waterfallcatering@verizon.net](mailto:waterfallcatering@verizon.net). Call us as soon as you have your event date - even without your exact food order, we can reserve the date/time slot for you. WE do close out party pan orders due to maximum kitchen capacity especially during the summer & holiday party season.

A date-hold deposit is due when securing your date. Final orders need to be confirmed 7 days prior to your delivery. We use an online system for credit card payments and correspondence. Changes to orders are automatically updated and you are always copied. Deposits are non-refundable, but can be applied to a future date if 30 days notice is provided.

## ORDERING

We offer two options for ordering:

**PARTY PAN** orders are ala carte food items. Priced by the pan, tray or in some cases by the piece. This economical option allows you to choose from a limited list. There are no party supplies included with this option. You can add them for an additional charge.

Our **PER GUEST SOCIAL MENUS** come complete with entrees, hot side dishes, salad options, rolls and butter included. Disposable plates, silverware, wire chafing racks, sterno fuel, tongs/spoons ARE INCLUDED with this option. Party planning is much easier when all you need to provide us is the number of guests attending your event.

**652 Ridge Road, Pittsburgh, PA 15205    tel: 412-867-9196**

**[www.waterfallcateringppgh.com](http://www.waterfallcateringppgh.com)**

# SAMPLE Party Pan Ideas - Food ONLY Packages

Below are "sample" menus built from our party pan selections. Add, delete or create your own package from our Party Pan Menu! Packages below are intended to serve approximately 100 guests for an open house type service.

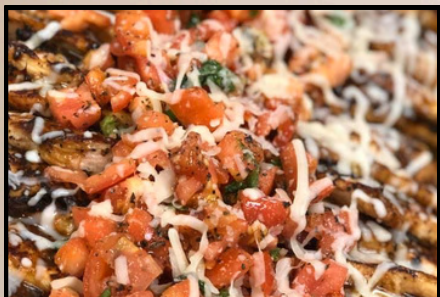
Packages include **FOOD ONLY**. Partyware is not included, but can be added for an additional charge.

## TRADITIONAL PACKAGE \$1200

- 100 pc ANY SINGLE FLAVOR Boneless Chicken Breasts
- OR** 50 pc Chicken Breasts + 2 Full Chicken Bites with Dipping Sauce
- 2 Full Pans of Classic Penne Pasta (*Marinara, Meat or Vodka*)
- 2 Full Pans of Meatballs OR Italian Sausage (*fresh rolls & cheese*)
- 2 Full Pans (1 Cheesy Potatoes & 1 Mac & Cheese)
- 2 Full Pans (1 Garden Salad & 1 Fruit Salad)

## SUMMER GRILL PACKAGE \$1400

- 100 pc Boneless Chicken Breasts (*Grilled Honey BBQ or Grilled Summer Bruschetta Chicken are excellent options*)
- 2 Full Pans Grilled Flank Steak with beef glaze
- 2 Full Pans Roasted Potato, Mac & Cheese or Creamy Scalloped Potatoes with Bacon
- 2 Full Pans Roasted Summer Vegetables • 2 Full Pans Salads (*1 Garden & 1 Italian Pasta Salad*)
- 8 dozen mixed cornbread & dinner rolls with butter



Grilled Summer Bruschetta Chicken

- Taco/ Nacho Bar (With 150 Tacos, Ground Beef & Toppings on side)
- 2 Full Pans Tortilla Chips • Premium toppings (Cheese Sauce, Guacamole)
- 2 Full Pan Mac & Cheese • 3 Full Pans Boneless Chicken Bites (dipping sauces)
- 50 pc Hot Pretzels with Mustard Dips • 1 Full Pan Mini Swedish Meatballs

**ADD PULLED CHICKEN TO YOUR TACO BAR FOR \$150**

## SNACK ATTACK \$1400

## ITALIAN PASTA & SALAD BAR \$1025

- 2 Full Pans of Classic Penne Pasta (*Marinara, Meat OR Vodka*)
- 2 Full Pans of Premium Pasta (*Smoked Chicken Vodka, Chicken or Shrimp Tortellini Alfredo, OR Bowtie & Tricolor Rotini Spirals with Olive Oil, Garlic Primavera Sauce with Shrimp, Chicken or Roasted Veggies*)
- 1 Full Pans of Meatballs in Marinara Sauce • 1 Full Italian Sausage with Sweet Peppers & onions
- 2 Full Pans Salad (*1 Garden Salad & 1 Caesar Salad*) • 1 Full Pan Grilled Chicken Strips • Fresh Rolls & Butter
- Three Salad Dressings, Shredded Cheese, Croutons on the Side

## ADD ON OPTIONS.....

- **SLIDERS:** Build your own- includes a full pan of: BBQ Pulled Pork, Thinly Sliced BBQ Beef, Thinly Sliced Beef Au Jus OR Pulled Chicken) includes 4 dozen mini rolls, shredded cheese on side \$100
- **NEW ITEM!** Loaded Mac/Cheese \$95 per pan (Buffalo OR Grilled chicken with bacon, chives, crispy breadcrumbs)
- Herb Crusted Hoagie Sandwich Tray (*24 Mixed sandwiches*) \$65
- Miniature Sandwich Tray (*20 pc Mini Croissants or Petite Rolls with your choice of filling*) \$40
- Colorful Wrap Sandwich Tray (*22 half wraps per tray, your choice of filling*) \$65
- Jumbo Chicken Fingers (*25pc \$45, 50pc \$85, 100pc \$160*)
- Full Pan Green Beans \$75, Full Pan Roasted Summer Vegetables \$95
- Full Pan Fruit Salad \$110 or Watermelon Display with Fruit Skewers \$150

ADD ON: Mini Croissant Platter \$40



ADD ON: Three Foot Jumbo Hoagie \$65



# Casual Picnic Menu

Our popular picnic menus include entrees, sides, salads, rolls, butter and basic foam partyware. Also included are serving tongs/spoons and lightweight wire chafing racks with sterno fuel) MIN 40 guests.

## TRADITIONAL PICNIC

(2) Entree Selection - \$18.00 per person

(3) Entree Selection - \$22.00 per person

Include 2 sides, 2 salads, Rolls & Butter



### Traditional Entree Options:

- Boneless Chicken Breasts (BBQ, Grilled or Crispy)
- Italian Sausage
- BBQ Pulled Pork Sliders
- Pulled Smoked Chicken Sliders
- Sliced Beef Sliders-BBQ or AuJus
- Kielbasa or Grilled Brautwurst
- Beef Burger Bar
- ADD Hot Dogs (+\$1.50 per guest)

### Traditional Side Options:

- Cheesy Potatoes
- Scalloped Potatoes
- Mac & Cheese
- Pierogies
- Green Beans & Carrot Blend
- Roasted Corn Niblets
- Roasted Potato
- Pasta Marinara or Vodka



## BURGER & HOT DOG BAR

\$15.00 per guest

Includes 1 hot side & 1 salad

ALL Buns, Toppings & Condiments

### Picnic Salad Options:

- Coleslaw
- Pasta Salad
- Macaroni Salad
- Garden Salad
- Broccoli, Cheddar, Bacon Salad
- Potato Salad
- Watermelon Slices



ADD ON: Watermelon Display \$150

### ADDITIONS:

Add a second picnic salad or side, \$2 per guest  
Add cookie & brownie bite tray, \$1.50 per guest  
Turkey or Veggie Burgers, \$5 each (min 6)  
Canned Soda/Bottled Water, \$2.00 each  
Displayed Lemonade or Tea, \$15 per gallon  
+ \$125 Dispenser Display Rental  
Coffee Service \$2.50 per guest  
Watermelon Display \$150  
Serving Staff Fee \$35 hr (\$150 min)  
Premium Disposable Package +\$2 per guest  
Appetizer platters are available

1000 GSK Drive, Coraopolis, PA 15108 tel: 412-867-9196

[www.waterfallcateringppgh.com](http://www.waterfallcateringppgh.com)

# ADD ON - APPETIZERS & DESSERT TRAYS\*

\*Served on disposable platters

## MEDIUM (20-25), LARGE (40-50)

### Watermelon Display Tray \$150

Filled with fruit salad, berry garnish and 20 skewers

### Domestic Cheese & Pepperoni Tray \$75/\$125

4 variety cubed cheese with pepperoni & mustard

### Fresh Vegetables \$75/\$125

Colorful display with ranch dip

### Cheese & Berry Tray \$90/\$135

Colorful mixture of cubed cheese with fruit & berries

### Fruit Salad Bowl (cubed) \$70/\$110

### Fruit Display \$85/\$130

Display tray with berry garnish

### Tuscan Charcuterie Display \$150/\$225

Chilled Roasted Vegetables, Assorted Olives, Marinated Chilled Tortellini Pasta, Italian Meats & Cheeses

### Mediterranean Display \$150/\$225

Chilled Roasted Vegetables, Flavored Hummus, Creamy Cucumber Dip, Olives, Tabbouleh, Non-meat Grape Leaves, Baba Ghanoush Dip, Feta Cheese, Pita Chips

### Jumbo Shrimp Cocktail \$65/\$105/\$150

36, 72 or 108 pc with Tangy Cocktail Sauce & Lemons

### Freshly Baked Pretzel Sticks \$50/\$100

25 or 50 sticks with Mustard dips

### Homemade Potato, Pita or Tortilla Chips \$30 per pan

### Homemade Vegetable Dip, Ranch or Salsa \$5

### Miniature Cocktail Meatballs \$50 half/ \$100 full

(swedish, bbq, marinara or oriental style)

### Hot Dips \$60 half/ \$120 full

(Buffalo or spinach artichoke, includes tortilla chips)

### Boneless Chicken Bites \$100 full (approx 125 pc)

### Chicken Tenders (25pc \$45, 50pc \$85, 100pc \$160)



## BEVERAGES

**Decaf, Regular Coffee Service, Hot Tea** \$2.50 each

**Bottled Water or Canned Soda** \$2 each

**Fresh Tea, Sweet Tea or Lemonade** \$15 gallon

## SWEETS

**Chocolate Dipped Tray** \$70 med/ \$125 large

Strawberries, Raspberries, Chocolate Chunk Brownie Bites

**Miniature Bites Tray** \$80 med/ \$135 large

Assorted Miniature Cheesecake Bites, Brownie Bites, Dipped strawberries Raspberries, Chocolate Truffles

**Cookies & Brownie Bites** \$18 per dozen/ \$1.50 each

**Chocolate Dipped Strawberries** \$20 dozen

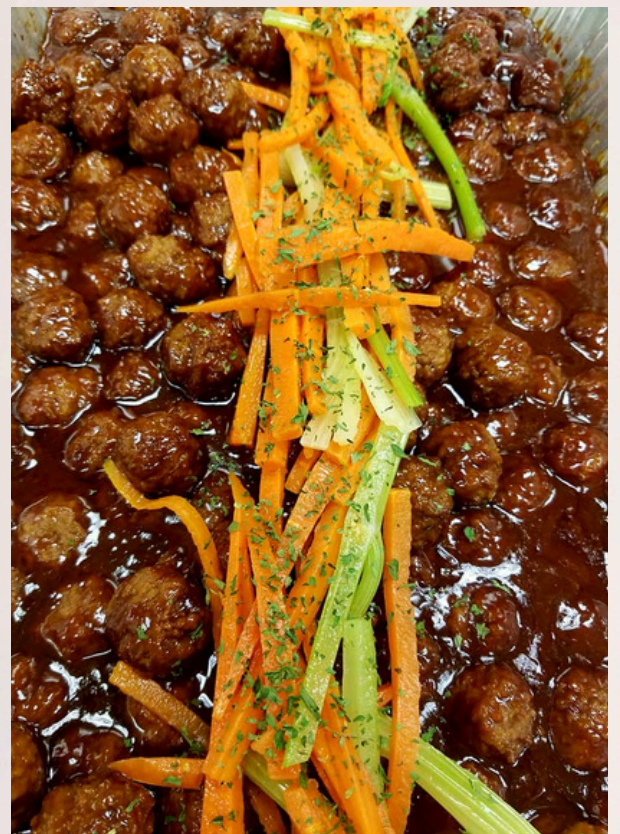
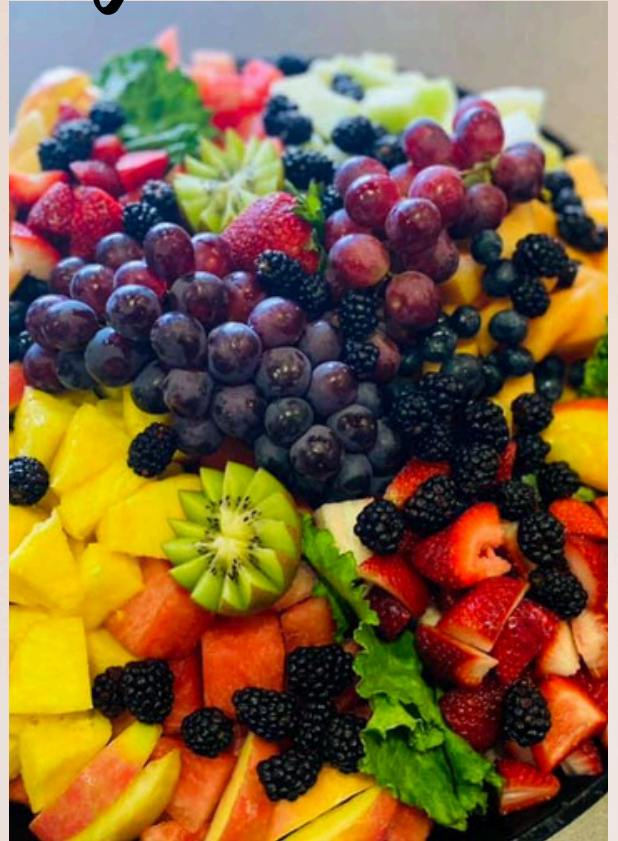
**Mini Cupcakes** \$10 dozen

**Gourmet Cupcakes** \$40 per 2 dozen

# Waterfall Catering

## GRADUATION PARTY TIPS

- Children under 10, take 50% off of the per person menu
- When ordering from the per person menu, you typically don't need to order for ALL of your graduates "student friends", due to "graduation party-hopping"
- Gluten Free, Vegan, Vegetarian can be accommodated.
- When ordering party pans to last throughout a long day - ask to have your full-size salads split into two smaller pans for freshness.
- You can add a server to your event for \$150 (up to 4 hours)
- Delivery fees start at \$50 and are determined by size and location of your event.
- Party Pan orders do NOT include any party supplies. You will need to provide them yourself or add to your order
- Serving Tongs/Spoons \$1.25 each, Wire Chafer Rental \$5 per pan (includes one sterno fuel). Foam dinner plates, salad bowls, silverware packets are \$1.25 per place setting
- Premium Disposable Package is \$2.00 per place setting.



652 Ridge Road, Pittsburgh, PA 15205 tel: 412-867-9196

[www.waterfallcateringppgh.com](http://www.waterfallcateringppgh.com)